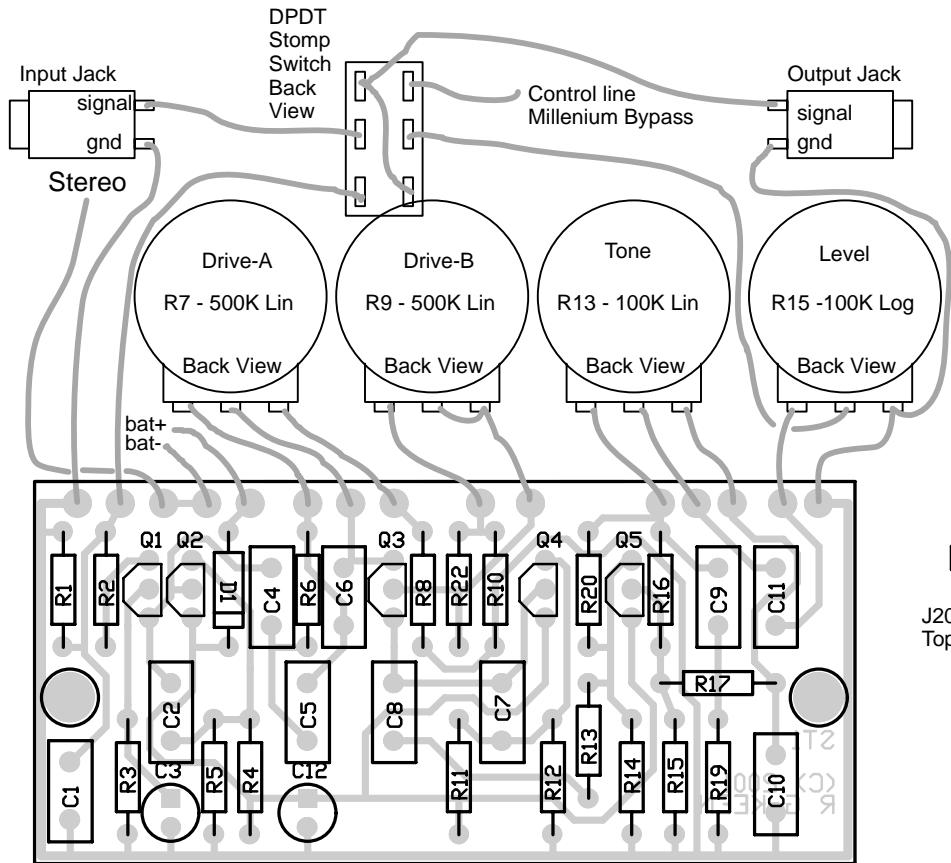


Sweet Thing

Copyright 2001 R.G. Keen. All rights reserved. No permission for local copies or serving from hosts other than <http://www.geofex.com>.

A PCB layout for Doug Hammond's Sweet Thing circuit. Shown with all off-board wiring including true bypass with the Millenium Bypass for an indicator LED. See <http://www.geofex.com> for the Millenium Bypass circuit. The battery is a single 9V. The wire going to the input jack "Stereo" connection is for power switching.



Note: Square pad is positive on electros - C4, C1.

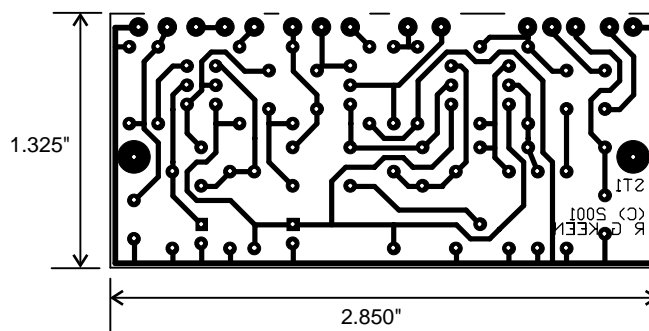


Parts List

100 - R3, 10
 1K - R8,22
 2.2K - R19
 10K - R15, 16, 17
 33K - R2
 100K - R13, 20
 470K - R6
 1M R1,4,5,11,12,14

500K dual lin pot - R7,9
 R18 = 50K lin pot
 R21 = 100K log pot
 D1 - 1N4148

22pF - C1
 470pF - C5
 0.001 - C6
 0.022 - C10
 0.047 - C11
 0.1 - C2,4,7,8,9
 10uF - C12
 22uF - C3



Real size toner transfer pattern.