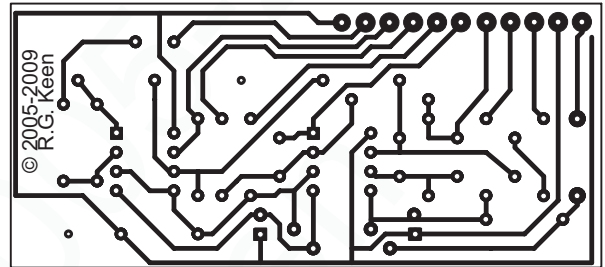
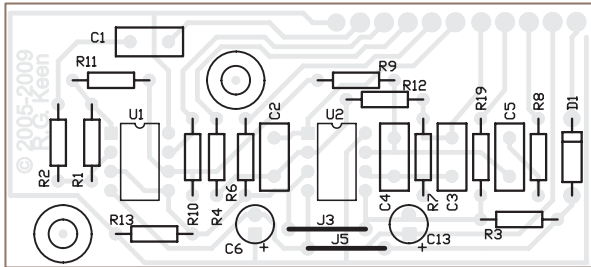


Tycho Parapedal Clone

Original - positive ground

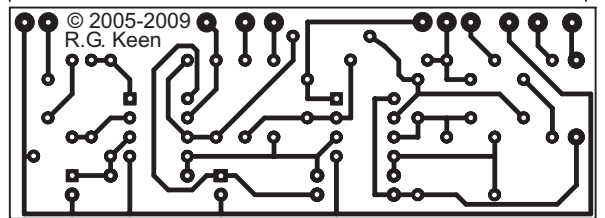
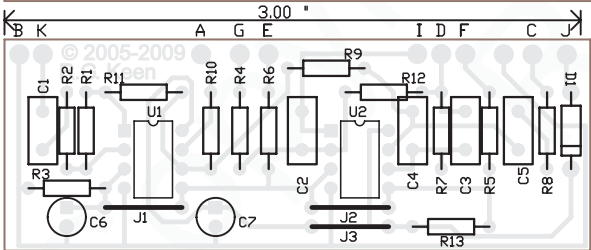
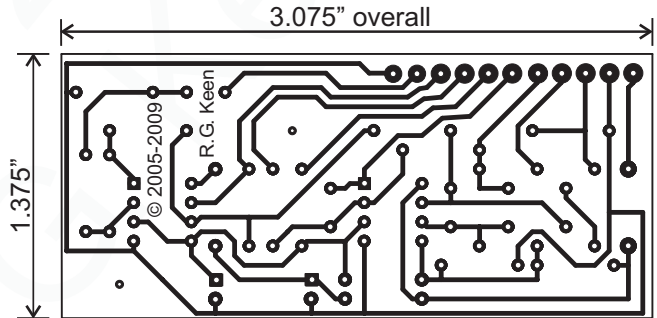
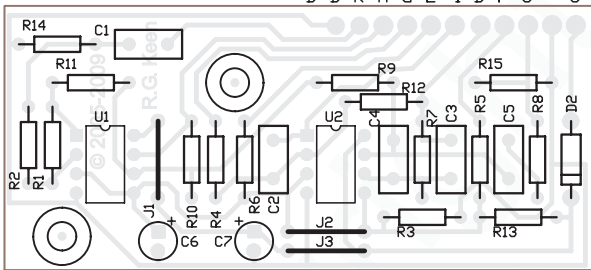
Fits in a Crybaby Wah Shell and mounts on the existing mounting bosses/holes.

- B Batt+ (=Gnd)
- B Input Jack Ground
- K Input Signal
- A Pot A Hot Lug
- G Pot A Wiper Lug
- E Pot A Cold Lug
- I Pot B Hot Lug
- D Pot B Wiper Lug
- F Pot B Cold Lug
- C Output Signal
- J Output Jack Ground
- U Battery (-)



Modern - same form factor, mounts in Crybaby shell but now negative ground. Note wiring changes!

- B Input Gnd
- B Input Signal
- K Pot A Hot
- A Pot A Wiper
- G Pot A Cold
- E Pot B Hot
- I Pot B Wiper
- D Pot B Cold
- F Output Signal
- C Output Gnd
- J Battery (-)



Layout and documentation copyright 2005-2009 R.G. Keen. All rights reserved. No permission for local copies or serving to the web from servers other than <http://www.geofex.com>